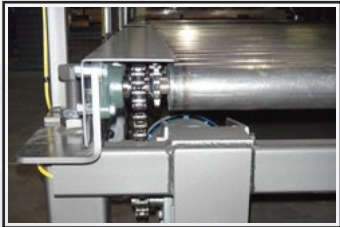


# **DYNAMIC LINE** > *fully automated, conveyORIZED stretch packaging systems*

**DYNAMIC TTX** ▶

**SYSTEMS SHOWN  
WITHOUT SAFETY FENCING**



## **HEAVY DUTY CONVEYORS**

Conveyors that come standard on Mach 1 automatic systems are built in-house from the strongest materials and quality components. Expect frames built with heavy gauge and structural steel, fully welded conveyor rollers with solid steel axels and cast-iron flanged bearing support. Our fabricating techniques have been developed to provide tightly assembled conveyor rollers with side-to-side play.



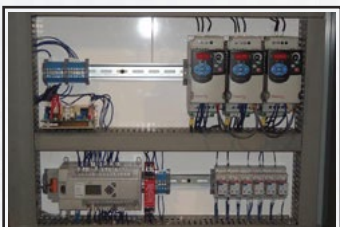
## **ROBUST ENGINEERING**

We are the company known for heavy duty, stable and long lasting machinery. This comes as no surprise when all of our engineering relies on structural steel and precision laser cut steel components. Oversized mechanical components combined with smart technologies contribute to the lowest maintenance requirements in the industry.



## **250% FILM PRE-STRETCH**

Often described as the “heart” of a stretch wrap system, the X-Stretch 250% pre-stretch film carriage is what sets apart Mach 1 expertise from the rest of the pack. The most powerful pre-stretch film carriage in the industry, the X-stretch is an advanced combination of technology and all-steel components that provides the best film feed control with smooth and consistent delivery. The system also features oversized bearings, chain/sprocket roller drive and precision machined pre-stretch rollers.



## **CONTROL PANEL**

The ALLEN-BRADLEY controller (PLC) and touch screen are paired to provide the most intelligent and intuitive operator interface. All system functions can be calibrated on the touch screen and critical parameters are password protected. Every AC motor, including conveyor motors, has a dedicated ALLEN-BRADLEY drive for a smoother operation and more flexible settings.

## PREMIUM AUTOMATION

Mach 1's DYNAMIC automatic stretch packaging systems are the perfect solution for higher production rates with around the the clock operation. These conveyORIZED systems can be customized and implemented as stand alone or in-line with endless configuration possibilities. Our engineering capabilities can provide an

infinite list of optional features for specific applications or load types. With quality components and heavy duty construction, the DYNAMIC line of automated systems is your ultimate solution for long term reliability and lowest cost of operation.

## TECHNICAL SPECIFICATIONS - DYNAMIC LINE TTX

### LOAD SPECIFICATIONS

> Maximum Load Size	48" x 48" Standard, Larger Optional
> Maximum Load Height	84" Standard, Up to 110" Optional
> Maximum Load Weight	5,000 lbs Standard, 6,000 lbs Optional
> Production Capacity	Up to 45 loads per hour

### FILM PRE-STRETCH FEATURES

> Power 250% film Pre-Stretch	Standard
> Film Capacity	20" Standard, 30" Optional
> No Contact Film Tension Sensor	Standard
> Corner Compensation	Automatic, X-Stretch system
> Easy Thread Film Threading	Standard

### MACHINE FEATURES

> Arm / Turntable speed	Up to 16
> Arm Brake	N/A
> Arm Support	N/A
> Turntable Home Position Lock	Standard
> Film Carriage Drive	Single Chain
> Short Load Capabale	Standard (12" min.)
> Hot Plate Film Cutter	Standard
> Standard Voltage	240 VAC / 3 ph / 60 Hz
> Standard Air	4 CFM @ 80 PSI

### CONVEYOR FEATURES

> Roller Spacing	3.5" Standard, 2.75" Optional
> Roller Bearing Type	Ball Bearing with Cast Iron Bolt-on Flage
> Between Frame width (BFR)	52"
> Top Of Roller Height	18" Standard, Other Optional
> Conveyor speed	Adjustable 20 to 60 FPM

### CONTROL FEATURES

> Micro controller	Allen Bradley MicroLogix
> Touch Screen interface	Allen Bradley PanelView 600 plus
> Motor Control	Allen Bradley PowerFlex
> Control Panel Cabinet	NEMA12
> System modes	Manual, Automatic, Automatic Pass Through
> Film force control	Adjustable, Automatic Tension Release at Beginning And End of Cycle
> Independent Top/ Bottom Wrap Count	Standard
> Independent Film Up/ Down Speed	Standard
> Manual Wrapper Controls	Standard
> Manual Conveyor Forward/ Reverse Jog	Standard
> Conveyor Speed Adjustable	Standard

# Mach 1

📍 3245 Bd. Pitfield, Saint-Laurent, QC Canada H4S 1H3

✉ info@strapco.ca [www.strapco.ca](http://www.strapco.ca)

☎ 514 683 0555

📠 514 683 0557

🔹 Strapco