



R&E

ROBOTICS & END OF LINE

# RTD ROTARY TOWER DELUXE & RTA ROTARY TOWER AUTOMATIC FLEX SERIES PALLET WRAPPERS

The fastest way to boost your end-of-line stretch packaging efficiency.

Improve efficiency fast. The RTA & RTD rotate the film carriage around a stationary load sitting directly on the floor. Which is ideal for quickly wrapping even difficult loads including fragile, unstable, light, or extremely heavy loads – there’s no weight limit.

When using the RTD the operator simply attaches the film tail to the load at the start of the cycle and detaches it at the end. The RTA speeds throughput even more, by allowing the operator to remain seated on the forklift. The RTA stretch wrapper automatically attaches, cuts and wipes the film tail smooth. The operator simply places the load, pulls a hanging lanyard to start the cycle. The operator is free to stage the next load. When the operator returns the load is wrapped and ready.

For safety, a tower mounted obstacle sensing system helps detect obstructions in the swing circle. Optional fencing provides an even more controlled and safer environment.



RTA - Shown with options

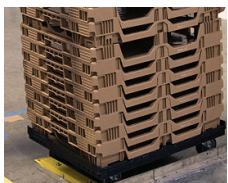
## FEATURES & BENEFITS

- 20" Insta-Thread™ Film Carriage standard 260% pre-stretch, wraps to within 3" of floor
- Revo-Logic technology Revo-Logic technology with photo-eye sensor carriage ensures precise application of programmed wraps – maximizing load containment and film yield
- Automatic load height sensing photo-eye
- Separate up and down film carriage speed control and top and bottom adjustable wrap counts
- Low maintenance, long lasting AC motors and Variable Frequency Drive (VFD) controllers
- No maximum load weight capacity
- Precision ring bearing drive system
- Structural steel construction for durability
- Heavy duty chain & sprocket drive

## ADDITIONAL RTA FEATURES & BENEFITS

- Labor saving film tail attach, cut & wipe automatically secures film
- Remote cycle start with hanging lanyard switch

## APPLICATION EXAMPLES



BAKERY



BEER & BEVERAGE



BUILDING SUPPLIES

## TYPICAL PRODUCT SPECIFICATIONS

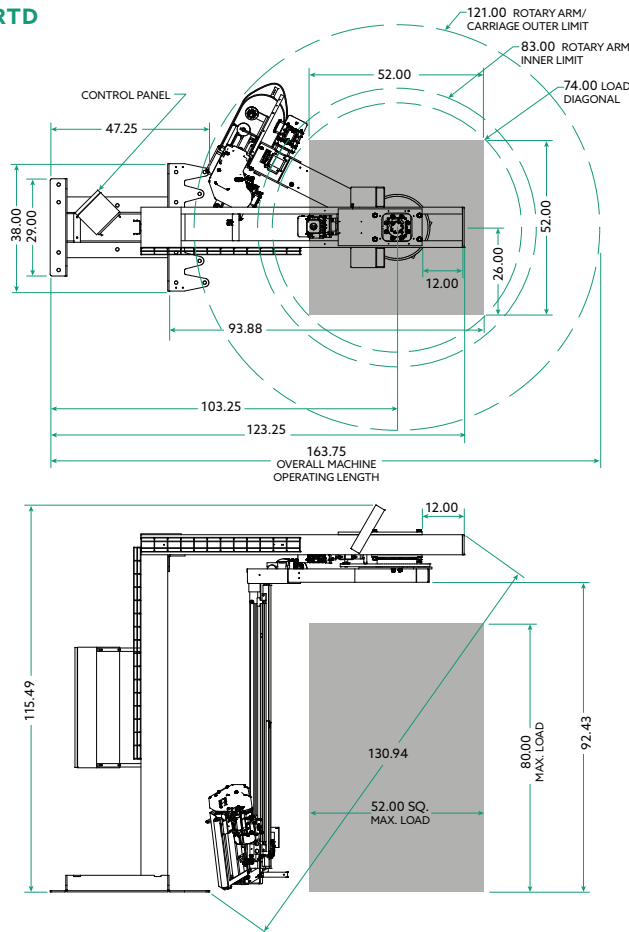
<b>Footprint</b>	Process Area Approx. 164" W x 121" D x 116" H
<b>Speed</b>	16 RPM w. adjustable soft start (22 RPM optional)
<b>Display</b>	7" color IntelVue HMI
<b>Frame</b>	Heavy-duty welded tubular steel
<b>Mast Height</b>	80" Standard (Extended masts up to 110" optional)

<b>Standard Voltage</b>	115/1/60, 20 Amp
<b>Main Electrical Enclosures</b>	Built to UL508A standards and UL Listed (Enclosures optional for CE will not carry UL label)
<b>Air Requirements</b>	3 CFM @ 80 PSI

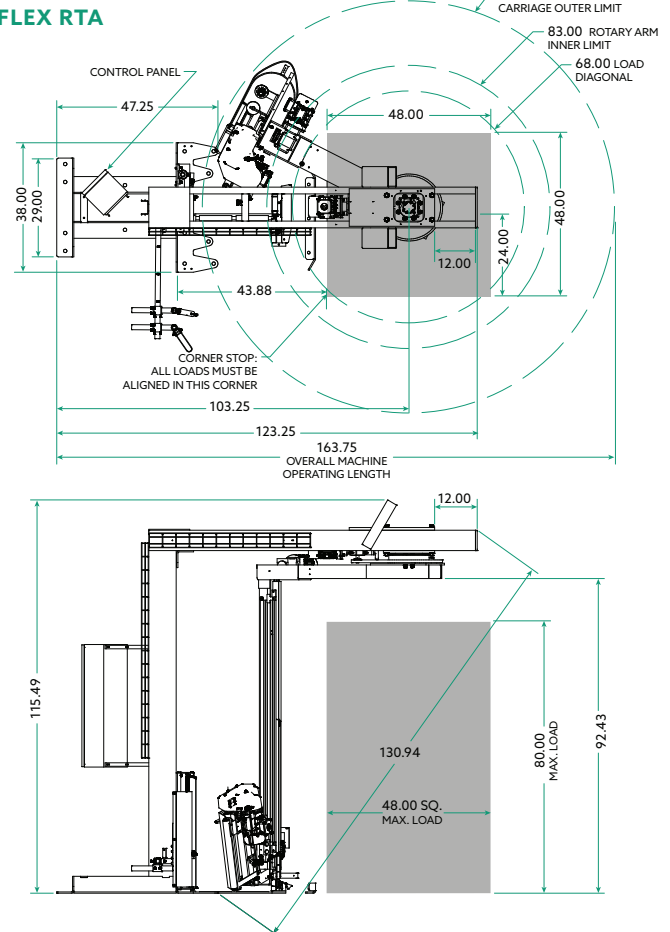
## MACHINE DRAWINGS – Dimensions - Inches

Standard equipment shown.

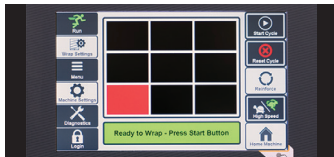
### FLEX RTD



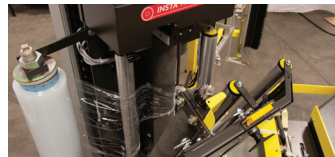
### FLEX RTA



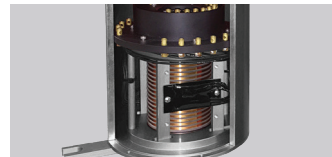
## STANDARD FEATURES



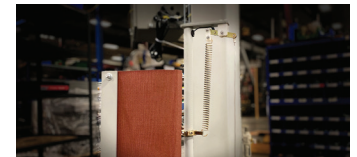
**7" IntelVue HMI**  
Easy-to-use, password protected color touch-screen HMI with Web based dashboard and Ethernet port for remote viewing of data & diagnostics.



**Insta-Thread Film Delivery**  
Easy film loading and threading. Specially designed rollers elongate film a standard rate of 260% for the most secure load at lowest cost.



**Rotary Slip Ring**  
The high-quality, fully sealed slip ring dramatically reduces maintenance compared to non-sealed slip rings guarding against dirt, dust, and debris.



**Film Tail Cut & Wipe**  
Innovative asymmetrical film clamp grips the film web while the hot wire cuts the film. The load seeking pneumatically actuated belt smooths and secures the film tail to the side of the load.