

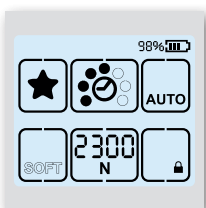
# OR-T 130 / OR-T 260 / OR-T 450

## TECHNICAL DATA SHEET

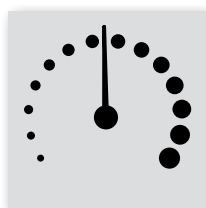
Hand Tool for Plastic Strapping



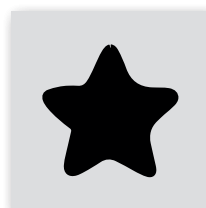
### FEATURES



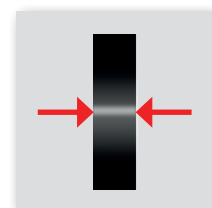
■ **Full touch user interface**  
for easiest adjustment of  
parameters and tool status  
information for operator



■ **Variable tension speed**  
controlled by finger pressure  
for sensitive packages



■ **Favorite strapping function**  
for quick one touch switch of  
tool settings for varying packages



■ **Strap alignment indication**  
to ensure that strap is inserted  
correctly for higher process  
security

TECHNICAL DATA



Strapping tool			
Operation mode		auto / semi / manual	auto / semi / manual
Tension force range	Standard Soft	400–1200 N (90–270 lbf) 150–750 N (22–165 lbf)	900–2500 N (200–560 lbf) 400–1360 N (90–305 lbf)
Variable tension speed range		0–290 mm/s (11.3 in/s)	0–220 mm/s (8.6 in/s)
Weight (incl. battery)		3.6 kg (7.9 lb)	3.8 kg (8.4 lb)
Dimension (L x W x H)		370 x 141 x 135 mm 14.5" x 5.5" x 5.3"	370 x 141 x 135 mm 14.5" x 5.5" x 5.3"
Working temperature		-10 °C to +40 °C (14–104 °F)	-10 °C to +40 °C (14–104 °F)
Relative humidity		up to 90%	up to 90%
Battery / charger			
Charger type		Bosch	Bosch
Battery charger voltage		100 or 110 or 230 V	100 or 110 or 230 V
Charging time		15–30 min	15–30 min
Battery type		Bosch Li-Ion 18V, 2.0Ah	Bosch Li-Ion 18V, 2.0Ah
Cycles per battery charge			
· Low tension		800	800
· Medium tension		600	400
· High tension		400	200
			800
			500
			300
Strap			
Strap		PET (Polyester) PP (Polypropylene)	PET (Polyester) PP (Polypropylene)
Width		9–10, 12–13 mm (3/8", 1/2")	12–13, 15–16 mm (1/2", 5/8")
Thickness		PET 0.4–0.8 mm (.015"–.031") PP 0.5–0.8 mm (.019"–.031")	0.5–1.0 mm (.019"–.040")
			15–16, 18–19 mm (5/8", 3/4")
			0.8–1.3 mm (.031"–.051")
Features			
Real time indication of applied tension force		●	●
Variable tension speed		●	●
Favorite strapping function		●	●
Display color indication for tool status information		●	●
Strap alignment indication		●	●
Strap dust blow out vent		●	●
Battery protection		●	●
0–Tension welding		●	●

ACCESSORIES



■ **User interface cover**  
for additional protection in harshest environment



■ **Protection plate**  
for usage on abrasive surfaces



■ **Suspension bow**  
for stationary application